

FAUNA AND FLORA RECORDS 2015

(for groups other than birds)

compiled by

TIM DAVIS & TIM JONES
Harpers Mill, Berrynarbor, Ilfracombe, Devon EX34 9TB
Email: gen@birdsoflundy.org.uk

The following records are taken mainly from the LFS Logbook and are reproduced here in good faith. No attempt has been made to verify these reports in their entirety. Thanks are due to Keith Hiscock, Beccy MacDonald and Alan Rowland who helped in various ways, and especially to everyone who entered records in the logbook.

WHALES, DOLPHINS AND PORPOISES

Minke whale *Balaenoptera acutorostrata*

14 Jun – one off Needle Rock, Jenny's Cove area, heading south at approximately 09.35 hrs (unattributed record).

15 Aug – one seen from MS *Oldenburg* during crossing to Lundy (unattributed).

Common dolphin *Delphinus delphis*

24 May – 20+ feeding fairly close in off South End (Richard & Rebecca Taylor).

7 Jun – one, dead with large wound to lower ventral area, off Tibbetts Point (Tim Davis & Tim Jones).

15 Jun – eight off South End heading west (Tim Davis & Tim Jones).

3 Aug – three breaching 500 m south-east of Castle green (Chris & Sharron Blackmore).

4 Aug – four 500 m east of Castle green (Chris & Sharron Blackmore).

6 Aug – approx. 25-30 seen during cetacean watch (10.00-12.20 hrs) from Castle Green (Chris & Sharron Blackmore).

16 Aug – pod of 12 seen half a mile off East Side.

18 Sep – five off East Side (Tim Davis & Tim Jones).

19 Sep – five off North End (Tim Davis & Tim Jones).

20 Sep – 20+ off the East Side (Mandy Dee).

Bottle-nosed dolphin *Tursiops truncatus*

27 May – 70 in four separate pods off Tibbetts Point.

6 Jul – one feeding with 25 Gannets (Martin Thorne, Morte Wildlife Group).

Harbour porpoise *Phocoena phocoena*

1 Jan – one off Seal Rock, North End.

3 Mar – two off South End (Andy Jayne).

4 Mar – one south of Rat Island (Andy Jayne).

26 Mar – six, Rat Island to Surf Point.

4 Apr – one, Lametry Bay.

15 Apr – three off Jenny's Cove (Paul Holt).

17 Apr – one in tide race off North End (Paul Holt).

20 Apr – one off Dead Cow Point (Sophie Perry).

21 & 22 Apr – one off Battery Point (Sophie Perry).

27 Apr – four of West Side at Old Light; c.50 spread over large area off North West Point (Sue James).

- 13 May – 12 off West Side (Chris Baillie).
- 23 May – one south of Rat Island (Tony Taylor).
- 24 May – three off South West Point (Tony & Ann Taylor).
- 26 May – three off South End (Tony Taylor).
- 29 May – one off South End.
- 16 Jul – two off West Side (Tony Taylor).
- 2 Aug – five feeding 1 km north-west of Needle Rock (Chris & Sharron Blackmore).
- 3 Aug – five, 500 m south-west of Castle green (Chris & Sharron Blackmore).
- 5 Aug – up to ten seen during cetacean watch (09.48-11.25 hrs) from Castle green (Chris & Sharron Blackmore).
- 6 Aug – five, 300 m due south of Castle Green (Chris & Sharron Blackmore).
- 7 Aug – five, 500 m west at Jenny's Cove (Chris & Sharron Blackmore).
- 8 Aug – four, 500 m off Castle Green; three, 300 m off North Light (Chris & Sharron Blackmore); two feeding off Black Rock (Rob Curtis & Tony Leat).
- 11 Aug – four, 300 m off Castle green (Chris & Sharron Blackmore).
- 12 Aug – five, 800 m off Castle green (Chris & Sharron Blackmore).
- 14 Aug – three, 800 m off Castle green (Chris & Sharron Blackmore).
- 15 Oct – six off the West Side, level with Halfway Wall.

SEALS

Common seal *Phoca vitulina*

- 25 May – one around the jetty (Martin Thorne).
- 6 Jul – one hauled out on Mouse Island (Martin Thorne, Morte Wildlife Group).
- 19 Jul – one, Devil's Kitchen (Jo Maris).
- 8 Aug – one hauled out at Rat Island (Martin Thorne, Morte Wildlife Group).

Grey seal *Haliophocoetes grypus*

- 8 Feb – three bulls, eight females and two juveniles hauled out at North End.
- 17 Feb – three in Landing Bay (Linda Brennan).
- 18 Feb – two, Gannets' Bay (Linda Brennan).
- 3 Mar – 30+ off north-east coast (Andy Jayne).
- 12 Mar – two off Lametor, one at Quarry Beach, one off North Light (Jane Elliott).
- 4 Apr – four juveniles between Lametry Bay and Needle's Eye.
- 15 May – six at Brazen Ward (Robin Hall).
- 5 Jun – up to 30 along East Side (Steffi & Ian Beath).
- 9 & 10 Jul – two in Devil's Kitchen; one in the Landing Bay (Simon Witt).
- 10 Jul – five near Gull Rock, East Side (Simon Witt).
- 18 Jul – six adults below North Light (Jo Maris).
- 28 Jul – 17 in Gannets' Bay.
- 17 Sep – newborn pup, Quarry Beach; seen with mother next day (RDJ).
- 18 Sep – 41 between Landing Bay and North End (Tim Davis & Tim Jones).
- 21 Oct – pup "floating" on shoreline on Landing Beach; five "white/cream pups" on Halfway Wall Bay rocks; two females and one bull also present; a "white-coloured hairy pup" in Kaaksburg bay on rocks with mother alongside.
- 30 Oct – two in Landing bay (Kingshott family).
- 10 Nov – pup on Quarter Wall cove beach (Alan Rowland *et al.*).

SHARKS

Basking shark *Cetorhinus maximus*

- 30 May – one in the Landing Bay (Charlie Smith & Nic Saunders).

OTHER MARINE FISHES

Ocean sunfish *Mola mola*

6 Jul – one on the surface of the Landing Bay, seen from the Ugly (Martin Thorne, Morte Wildlife Group).

8 Aug – one seen from MS *Oldenburg* on crossing to island.

Grey mullet *Mugil cephalus*

18 Aug – “huge shoal” in Lametry Bay (Sue James).

MARINE INVERTEBRATES

The Archive for Marine Species and Habitat Data (DASSH) at the Marine Biological Association has been validating seabed marine biological data from around Lundy from various sources including:

1. Extracting information from the work of Edward Forbes in the 1840s. This has involved identifying what would have been Lundy data from tables that combined Lundy with South Wales data.
2. Extracting information from the Marine Fauna lists published in the LFS Annual Reports and georeferencing locations within polygons that match named places.
3. Extracting a small number of key papers (e.g. Red band fish, *Cepola rubescens*, distribution) from LFS Annual Reports and digitising the data.
4. Accessing data from Natural England surveys.
5. Working with Natural England/Environment Agency to access data from the grab sample surveys around the island in 2012.

The data will be archived by DASSH and, where permission is granted, it will be made available via the DASSH website (www.dassh.ac.uk) and the NBN (www.nbn.org.uk). Copies of data extracted from LFS Annual Reports will be made available for inclusion on the LFS website if desired.

Compass jellyfish *Chrysaora hysoscella*

10 Jun – one off Montagu Steps (Tim Davis & Tim Jones).

9 Jul – one below jetty (Andrew Jewels).

Moon jellyfish *Aurelia aurita*

10 Jun – one off Montagu Steps (Tim Davis & Tim Jones).

29 Jun – twenty, bay between Gannets' Bay and Mousehole & Trap (Alan & Sandra Rowland).

6 Jul – two stranded on Landing Beach (Andrew Jewels).

9 Jul – 200 below jetty (Andrew Jewels).

10 Jul – six, Brazen Ward (Alan & Sandra Rowland).

25 Jul – large numbers in Landing Bay and stranded at high water (Keith Hiscock) – see colour plate 1.

Blue jellyfish *Cyanea lamarckii*

10 Jun – one off Montagu Steps (Tim Davis & Tim Jones).

5 Jul – one below Jetty (Andrew Jewels).

9 Jul – 5 below jetty (Andrew Jewels).

Barrel jellyfish *Rhizostoma pulmo*

27 Apr – four off North-East Point (Sue James).

29 Jun – one, bay between Gannets' Bay and Mousehole & Trap (Alan & Sandra Rowland).

Comb jellyfish *Beroe cucumis*

9 Jul – 30 below jetty (Andrew Jewels).

Lion's mane jellyfish *Cyanea capillata*

18 Aug – one in Landing Bay close to jetty (Chlöe Nicholson).

MARINE PLANTS

Japanese wireweed *Sargassum muticum*

17 May – one plant found east of the jetty and another in pools at Devil's Kitchen (unattributed records).

MARINE FAUNA

Scarlet & gold star coral *Balanophyllia regia*

17 May – 47 counted through the water at western monitoring site at Devil's Kitchen (Keith Hiscock).

Pelagic gooseneck barnacle *Lepas anatifera*

25 Jul – a cluster at Hell's Gates on a plastic bottle (Keith Hiscock) – see colour plate 1.

Spiny starfish *Marthasterias glacialis*

17 Aug – one in Landing Bay, close to jetty (Chlöe Nicholson).

INTRODUCED FRESHWATER FISHES

Golden orfe *Leuciscus idus*

30 Oct – three in Quarry Pond (Michael Williams).

Mirror carp *Cyprinus carpio*

30 Oct – one in Quarry Pond (Michael Williams).

INTRODUCED REPTILE

Slow-worm *Anguis fragilis*

3 Apr – at least two in Millcombe gardens (LFS Work Party).

NATIVE LAND MAMMALS

Pygmy shrew *Sorex minutes*

14 Feb – one by Blue Bung.

18 Feb – one, Stoneycroft (Linda Brennan).

10 May – one in Marisco Tavern (Chris Baillie).

1-12 Jun – a hair-tube study of Pygmy shrew distribution on Lundy found 23 positive signs, including one in the fireplace in the Barn, one at North East Point, and 21 at the Castle (Nathaniel Legall, Middlesex University).

12 Jun – one in Big St John's (Tim Davis & Tim Jones).

13 Jun – one in Blue Bung.

13 Jun – one climbing trunk of an elder on the Terrace (Tim Davis & Tim Jones).

22 Jun – one in Old School (Blue Bung).

1 Jul – one outside Big St John's (Alan & Sandra Rowland).

9 Jul – one near Devil's Limekiln (Simon Witt).

16 Jul – one, Punchbowl Valley and one heard, Ackland's Moor (Tony Taylor).

21 Jul – one by North Light (Sara & Mark).

28 Jul – one by North Light.
2-4, 7-9 & 13 Aug – one in Castle Cottage (Chris & Sharron Blackmore).
28 Aug – one in lounge of Millcombe House (Les Anstey).
15 Sep – one on track near Brambles (Tim Davis & Tim Jones).

FERAL LAND MAMMALS

The following maximum estimates of feral land mammals on Lundy in 2015 were provided by Lundy Warden Beccy MacDonald:

Feral goat <i>Capra aegagrus hircus</i>	27
Sika deer <i>Cervus nippon</i>	80
Soay sheep <i>Ovis aries</i>	225
Rabbit <i>Oryctolagus cuniculus</i>	50

Other notable counts:

Feral goat *Capra aegagrus hircus*

13 Feb – six, including white kid, feeding near Tavern (Michael Williams).
15 Feb – 15 including four kids, Castle Hill (Alan Rowland *et al.*).
16 Feb – 16 including six kids around church (Michael Williams).
16 Mar – seven below VC Quarry.
25 Mar – seven in VC Quarry.
3 Jun – 16 eating Lundy cabbage in Millcombe (Roger & Rosy Key, Steve Compton).

Sika deer *Cervus nippon*

14 Feb – 13 on West Side above Gannet's Combe, plus seven north of Gannet's Combe.
17 Feb – 22 in Quarter Wall Copse and four in Gannet's Combe (Michael Williams).
14 Apr – 40 along East Side (Paul Holt *et al.*).
16 Apr – 11 near Brazen Ward (Hook family).
3 May – 20 in Brick Field.
18 May – 27 in Brick Field.

Soay sheep *Ovis aries*

14 Feb – 101 (71 in Middle Park, 28 N of Threequarter Wall, 3 North End; Alan Rowland *et al.*).
6 Jul – 80 by Halfway Wall (Andrew Jewels).
10 Jul – 80 along West Side between NW Point and Quarter Wall (Simon Witt).
16 Jul – 130 between Halfway Wall and Threequarter Wall (Mandy Dee).
19 Sep – 154, Middle Park and North End (Tim Davis & Tim Jones).
11 Oct – 180 (Tim Davis & Tim Jones).

BATS

Probable **Pipistrelle** *Pipistrellus* sp.

25 Sep – one, reading strongly between 46 and 52 MHz on Bat Box IIID detector, flying on east side of Tavern towards Barton Cottages (unattributed).

TERRESTRIAL & FRESHWATER INVERTEBRATES

BRISTLETAILS (Machilidae)

Sea bristletail *Petrobius maritimus*

5 Jul – one in Thrift along Beach Road (Andrew Jewels).

8 Jul – two in ivy by Blue Bung (Andrew Jewels).

LEECHES (Hirudinea)

Horse leech *Haemopsis sanguisuga*

18 May – one in puddle near Quarter Wall gate (Alan Rowland).

2 Jun – nine in big puddle on main track at Halfway Wall gate (Roger & Rosy Key, Steve Compton).

27 Jun & 1-10 Jul – between one and four in St John's Stream (Alan & Sandra Rowland).

8 Nov – one in ruts of main track near Quarter Wall gate (Alan Rowland).

SNAILS LIMPETS and MUSSELS (Mollusca)

A pea mussel *Pisidium* sp.

5 Jul – two, Pondsburry (Alan & Sandra Rowland).

MILLIPEDES (Diplopoda)

Pill millipede *Glomeris marginata*

5 Jul – one at bottom of Beach Road (Andrew Jewels).

SHRIMPS (Crustacea)

Freshwater Shrimp (*Gammaridae*)

27 Jun – two, St John's Stream (Alan & Sandra Rowland).

WOODLICE (Isopoda)

Woodlouse *Armadillium vulgare*

10 Nov – one in Middle Park (Alan & Sandra Rowland).

DAMSELFLIES & DRAGONFLIES (Odonata)

– see also p.91 for an overview of Lundy dragonflies

Common blue damselfly *Enallagma cyathigerum*

14 Jun – 30 males, four females & three teneralts at Pondsburry Tim Davis & Tim Jones).

15 Jun – 37, Pondsburry (Tim Davis & Tim Jones).

28 Jun – four, Pondsburry (Alan & Sandra Rowland).

10 Jul – one male, Pondsburry (Andrew Jewels).

13 Sep – two, Pondsburry (Dave Chown).

Blue-tailed damselfly *Ischnura elegans*

14 Jun – four males, Pondsburry (Tim Davis & Tim Jones).

28 Jun – four, Quarry Pond (Alan & Sandra Rowland).

28 Jun – four, Quarter Wall Pond (Alan & Sandra Rowland).

30 Jun – four, including mating pair, Quarry Pond (Alan & Sandra Rowland).

7 Jul – six, Quarry Pond (Andrew Jewels).

Migrant hawkler *Aeshna mixta*

15 Sep – one at North Light hawking insects along the wall of the lighthouse (Tim Davis & Tim Jones).

17 Sep – one on Terrace (Tim Davis & Tim Jones).

19 Sep – three, North End (Tim Davis & Tim Jones).

25 Sep – one, location not given (Andy Turner).

Emperor dragonfly *Anax imperator*

9 Jul – a male, Rocket Pole Pond (Andrew Jewels).

15 Jul – one male patrolling the edge of Pondsbury (Tony Taylor).

Vagrant emperor *Anax ephippiger*

13 Oct – a male seen at 14.00 hrs in Punchbowl Valley near West Side path – first record for Lundy. Seen well three times in flight over bracken and *Molinia* before flying out of view over the West Side. “Hawker-like, a bit smaller than Emperor dragonfly *A. imperator*. Dead-bracken coloured abdomen. Clearly contrasting blue first segment. Bronze-brown thorax. Clear wings. Eye colour did not contrast against thorax (i.e. not green or blue)” (Kevin Rylands & Ivan Lakin).

Red-veined darter *Sympetrum fonscolombii*

6 Jun – one at Pondsbury – the first record for Lundy; identified from photo by Richard Campey – see colour plate 5.

GRASSHOPPERS and CRICKETS (Orthoptera)**Speckled Bush-cricket** *Leptophyes punctatissima*

7 Jul – one, North Quarry (Andrew Jewels).

Common field grasshopper *Chorthippus brunneus*

6 Jul – two, Millcombe gardens (Alan & Sandra Rowland).

BUGS (Hemiptera)**Pondskaters (Gerridae)**

29 Jun – twenty, St John’s Stream (Alan & Sandra Rowland).

Backswimmers (Notonectidae)

A Backswimmer *Notonecta viridis*

5 Jul – four larvae, Pondsbury (Alan & Sandra Rowland).

Shieldbugs (Pentatomidae)**Red-legged shieldbug** *Pentatoma rufipes*

7 Jul – one on Turkey Oak, Millcombe (Andrew Jewels).

Gorse shieldbug *Piezodorus lituratus*

14 Feb – five in gorse between Government House and Blue Bung (Alan Rowland *et al.*).

15 Feb – seven in Millcombe (Alan Rowland *et al.*).

19 May – one by Quarter Wall gate (Alan Rowland).

27 Jun – two adults, 50 1st instars and eggs, St John’s Valley (Alan & Sandra Rowland).

28 Jun – adults, eggs and 1st instars, Quarter Wall gate and Blue Bung (Alan & Sandra Rowland).

7 Jul – seven adults: three in Millcombe north side; three in Millcombe south side; one at Quarter Wall (Alan & Sandra Rowland).

7 & 8 Jul – one below Government House (Andrew Jewels).

Note from Alan Rowland: Gorse shieldbug eggs were apparent at St John's Valley and at Quarter Wall gate from 27 Jun to 4 Jul, with instars seen occasionally, although they appeared to be dispersing or being predated as gradually fewer were noted. I checked many stands of gorse but only found this species on Gorse *Ulex europaeus*; I have not found it on Western Gorse *U. gallii*. However my searches have all been conducted when *U. europaeus* is in flower, and it may be that this is significant. Further searches are needed when only *U. gallii* is in flower to establish if it has a preference.

BEETLES (Coleoptera)

Sequence and nomenclature follow the *Checklist of Beetles of the British Isles* (Duff, 2008)

A Whirligig beetle *Gyrinus* sp.

29 Jun – forty, St John's Stream (Alan & Sandra Rowland).

A beetle *Carabus granulatus*

4 Jul – one, main track north of Threequarter Wall (Alan & Sandra Rowland).

Oil beetle *Meloe* sp.

18 Apr – two on path from Castle to Rocket Pole (Tony John).

23 May – one, either violet or black, on Castle Hill (Pete & Sarah Damon).

Green tiger beetle *Cicindela campestris*

2 Jun – present along East Side (Roger & Rosy Key, Steve Compton).

A ground-beetle *Pterostichus melanarius*

2 Jun 2016 – one above Quarry Bay (Roger & Rosy Key, Steve Compton).

Black snail beetle *Silpha atrata*

2 Jun – one inside brambles in northernmost quarry on East Side (Roger & Rosy Key, Steve Compton).

A beetle *Staphylinus caesareus*

3 Jul – one, Middle Park (Alan & Sandra Rowland).

10 Jul – one, main track near Widow's Tenement (Alan & Sandra Rowland).

Minotaur beetle *Typhaeus typhoeus*

15 Feb – one, Quarries (Alan Rowland *et al.*).

7 Apr – one on main track towards North End (Rachel Williams).

16 Apr – five on path above The Battery (Paul Holt).

29 May – one on path to quarries.

2 Jun – present along East Side (Roger & Rosy Key, Steve Compton).

6 Jun – one dead on Terrace (Tim Davis).

13 Jun – one on Lower East Side Path (Tim Davis & Tim Jones).

A dumbledor beetle *Anoplotrupes stercorosus* (= *Geotrupes stercorosus*)

31 May – present in North Quarry (Roger & Rosy Key, Steve Compton).

2 Jun – "lots" along East Side (Roger & Rosy Key, Steve Compton).

A dumbledor beetle *Anoplotrupes spiniger* (= *Geotrupes spiniger*)

31 May – present in North Quarry (Roger & Rosy Key, Steve Compton).

Rose chafer *Cetonia aurata*

22 Mar – one, East Side.

2 Jun – present along East Side (Roger & Rosy Key, Steve Compton).

6 Jun – one on Terrace (Tim Jones).

7 Jun – five north of Halfway Wall (Tim Davis & Tim Jones).

10 Jun – 11 along West Side, and one at Old Light (Tim Davis & Tim Jones).

28 Jun – four, Quarries (Alan & Sandra Rowland).

3 Jul – two, Lower East Side Path (Alan & Sandra Rowland).

4 Jul – two, north of Threequarter Wall (Alan & Sandra Rowland).

8 Jul – one, Castle (Andrew Jewels).

9 Jul – singles, Millcombe and on Beach Road (Andrew Jewels); two in Gannets' Combe and on Upper East Side Path (Alan & Sandra Rowland).

11 Jul – one, Hospital (Alan & Sandra Rowland).

15 Jul – one, Pondsburry (Frances Stuart); one near Old Light (Tony Taylor).

16 Jul – two, Terrace (Tony Taylor).

6 Oct – one on Lower East Side Path near Quarter Wall Copse (L. Black).

A click beetle *Prosternon tessellatum*

3 Jun – one on window ledge at Brambles (Roger & Rosy Key, Steve Compton).

A click beetle *Athous haemorrhoidalis*

4 Jun – present in Millcombe (Roger & Rosy Key, Steve Compton).

A click beetle *Agriotes pallidulus*

4 Jun – present in Millcombe (Roger & Rosy Key, Steve Compton).

A darkling beetle *Isomira murina*

31 May – one on Lundy cabbage flowers along Beach Road (Roger & Rosy Key, Steve Compton).

3 Jun – one just south of St Helen's Combe (Roger & Rosy Key, Steve Compton).

A leaf beetle Chrysomelidae

2 Jun – one, possibly *Chrysolina haemoptera*, just above Quarry Bay (Roger & Rosy Key, Steve Compton).

4 Jun – one, possibly *Chrysolina haemoptera*, on Beach Road by turn into Millcombe (Roger & Rosy Key, Steve Compton).

A mustard beetle *Phaedon cochleariae* or *armoraciae*

4 Jun – one on Lundy cabbage in Millcombe (Roger & Rosy Key, Steve Compton).

Heather beetle *Lochmaea suturalis*

10 Jul – two, North End (Andrew Jewels).

A flea beetle *Psylliodes luridipennis*

5 Jun – four on Lundy cabbage in Millcombe (Roger & Rosy Key, Steve Compton).

A flea beetle *Psylliodes napi*

4 Jun – two in Millcombe (Roger & Rosy Key, Steve Compton).

Lundy cabbage leaf weevil *Ceutorhynchus contractus pallipes* (= *C. minutus*)

2 Jun – on Lundy cabbage at Quarry Bay (Roger & Rosy Key, Steve Compton).

4 Jun – “hundreds” in Millcombe (Roger & Rosy Key, Steve Compton).

FLIES (Diptera)

Tachinid fly sp.

30 Jun – one, Beach Road (Alan & Sandra Rowland).

Noonday fly *Mesembrina meridiana*

30 Jun – two, Quarry Cottages (Alan & Sandra Rowland).

LADYBIRD SURVEY, 4–11 JULY 2015

Recording method and effort

Constant searching by eye whilst walking, checking paths, verges, walls etc for conspicuous species, e.g. 7-spot ladybird *Coccinella 7-punctata*. Uprturned umbrella and stick used to survey particular habitats (with permission from warden). Beach Road vegetation searched for 11-spot *C. 11-punctata* and 24-spot *Subcoccinella 24-punctata* ladybirds. Pine trees in Millcombe checked for a variety of species. Damp areas with rushes in North Quarry, Quarry Pond, St John's Valley and Middle Park searched for *Coccidula rufa*. Heather at North End searched for Hieroglyphic ladybird *Coccinella hieroglyphica*.

Results

No ladybirds seen.

Conclusions

Ladybirds are probably scarce on Lundy, with a few resident species, e.g. Hieroglyphic ladybird and *Coccidula rufa*, likely to show large annual population fluctuations. Seven-spot ladybird was described as "abundant" on 14 May 2008 (LFS Annual Report) but this appears to be the only record for Lundy post-1990. Was this a one-off migration event or is this species under-recorded? More research required. Any additional records welcome (andrewjewels@hotmail.co.uk).

Andrew Jewels

BUTTERFLIES (Lepidoptera)

Generally a poor year for butterflies on Lundy, but partly a reflection of apparently reduced observer coverage and consequently fewer records than in 2014.

Clouded yellow *Colias croceus*

Singles on 21 May and 6 Sept were the only records for the year.

Large white *Pieris brassicae*

Recorded on 19 days between 26 Apr (four) and 25 Sep (two), with a max of 12 on 6 Sep.

Maximum count for each month (top) and number of days recorded (bottom)

Jan	Feb	Mar	Apr	May	Jun	Jul	Aug	Sep	Oct	Nov	Dec
–	–	–	4	–	1	4	1	12	–	–	–
–	–	–	5	–	2	4	1	7	–	–	–

Small white *Pieris rapae*

Recorded on 26 days between 9 Apr (one) and 14 Oct (one), with a max of ten on 16 Apr & 30 May.

Maximum count for each month (top) and number of days recorded (bottom)

Jan	Feb	Mar	Apr	May	Jun	Jul	Aug	Sep	Oct	Nov	Dec
–	–	–	1	5	4	1	–	27	3	–	–
–	–	–	1	7	3	1	–	13	1	–	–

Green-veined white *Pieris napi*

Recorded on 27 days between 14 Apr (three) and 27 Aug (two), with a max of 12 on 16 Jun.

Maximum count for each month (top) and number of days recorded (bottom)

Jan	Feb	Mar	Apr	May	Jun	Jul	Aug	Sep	Oct	Nov	Dec
–	–	–	3	'lots'	12	3	5	–	–	–	–
–	–	–	1	7	12	3	4	–	–	–	–

Small copper *Lycaena phlaeas*

Recorded on 13 days between 13 May (one) and 20 Oct (one), with a max of 8 on 14 Oct.

Maximum count for each month (top) and number of days recorded (bottom)

Jan	Feb	Mar	Apr	May	Jun	Jul	Aug	Sep	Oct	Nov	Dec
–	–	–	–	2	1	–	5	4	8	–	–
–	–	–	–	2	2	–	2	2	5	–	–

Common blue *Polyommatus icarus*

Following a blank year in 2014, there was one record in 2015: a single butterfly on 3 Sep.

Holly blue *Celastrina argiolus*

Following a blank year in 2014, there was one record in 2015: a single butterfly at the extreme end of the flight period on 27 Aug.

Red admiral *Vanessa atalanta*

Recorded on 82 days between 5 Apr (one) and 2 Nov (one). A notable influx (especially along the West Side) occurred on 12 Jun when at least 165 were counted, though the real number present was likely to have been much higher. One was caught in a moth trap on the night of 15/16 Jun, showing that some continue to migrate at night.

Maximum count for each month (top) and number of days recorded (bottom)

Jan	Feb	Mar	Apr	May	Jun	Jul	Aug	Sep	Oct	Nov	Dec
–	–	–	3	1	165	6	4	20	75	1	–
–	–	–	7	1	16	9	6	21	20	2	–

Painted lady *Vanessa cardui*

Recorded on 56 days between 26 Apr (one) and 30 Oct (one), with a max of 48 on 15 Jun. Breeding confirmed with a caterpillar on Castle Hill on 16 Jul (Tony Taylor) – see colour plate 6.

Maximum count for each month (top) and number of days recorded (bottom)

Jan	Feb	Mar	Apr	May	Jun	Jul	Aug	Sep	Oct	Nov	Dec
–	–	–	1	2	48	4	2	16	5	–	–
–	–	–	1	4	14	11	2	16	8	–	–

Small tortoiseshell *Aglais urticae*

Recorded on 37 days between 5 Apr (one) and 30 Oct (two), with maxima of 12 on 13 Sep.

Maximum count for each month (top) and number of days recorded (bottom)

Jan	Feb	Mar	Apr	May	Jun	Jul	Aug	Sep	Oct	Nov	Dec
-	-	-	5	-	7	10	1	12	2	-	-
-	-	-	4	-	2	12	1	13	5	-	-

Peacock *Inachis io*

Recorded on 16 dates between 24 Jan (one) and 19 Sep (one), with a max of six on 8 Apr.

Maximum count for each month (top) and number of days recorded (bottom)

Jan	Feb	Mar	Apr	May	Jun	Jul	Aug	Sep	Oct	Nov	Dec
1	-	1	6	1	-	-	1	2	-	-	-
1	-	1	8	1	-	-	2	3	-	-	-

Speckled wood *Pararge aegeria*

One on 13 Sep in Millcombe was the only record for the year (Tim Davis & Tim Jones).

Wall brown *Lasiommata megera*

Two on 27 Aug was the only record for the year.

Grayling *Hipparchia semele*

Singles only, recorded on just five days between 3 & 9 Jul (one).

Gatekeeper *Pyronia tithonus*

Recorded on three days in late Jul, with a max of four on 21st, and on 4 Sep (one).

Meadow brown *Maniola jurtina*

Recorded on 32 days between 14 Jun (one) and 18 Sep (one), with a max of 144 on 9 Jul.

Maximum count for each month (top) and number of days recorded (bottom)

Jan	Feb	Mar	Apr	May	Jun	Jul	Aug	Sep	Oct	Nov	Dec
-	-	-	-	-	16	144	50+	2	-	-	-
-	-	-	-	-	6	14	9	3	-	-	-

Ringlet *Aphantopus hyperantus*

After a blank year in 2013, but a partial recovery in 2014, hopes were that the better summer weather during 2014 would lead to good numbers in 2015. However, there were records on only eight days: 29 Jun (one), on six days in Jul (max two) and on 10 Aug (one).

Small heath *Coenonympha pamphilus*

Recorded on 41 days between 4 May (one) and 13 Sep (five), with a max of 27 on 7 Jun.

Maximum count for each month (top) and number of days recorded (bottom)

Jan	Feb	Mar	Apr	May	Jun	Jul	Aug	Sep	Oct	Nov	Dec
-	-	-	-	2	27	7	-	60	-	-	-
-	-	-	-	8	15	11	-	7	-	-	-

MOTHS (Lepidoptera)

Common and scientific names follow the popular *Field Guide to the Moths of Great Britain and Ireland* (P. Waring & M. Townsend, 2nd edition 2009). The digits prior to each common name are the 'Bradley & Fletcher' numbers from *A Recorder's Log Book or Label List of British Butterflies and Moths* (J.D. Bradley & D.S. Fletcher, 1979), which provide the most widely recognised sequence of British moths, used in Waring & Townsend and elsewhere.

A Provisional List of the Moths of Lundy, Devon, compiled by S.D. Beavan and R.J. Heckford, was published recently in the British Journal of Entomology and Natural History (Volume 27, 2014, pp45-62).

17 **Common Swift** *Korscheltellus lupulina*

2 Jul – one, Little St John's (Alan & Sandra Rowland).

Burnet moth *Zygaena* sp.

3 Jun – thousands of pupae just north of the Castle (Roger & Rosy Key, Steve Compton).

26 Jun – six at South End.

28 Jun – adults, cocoons and caterpillars abundant in St John's Valley (Alan & Sandra Rowland).

30 Jun – "numerous" by side of Square Cottage and by the track to the Castle.

19 Jul – up to 15 on a clump of Thyme near the Castle (Jo Maris).

169 **Six-spot burnet** *Zygaena filipendulae*

2 Jul – 4, St John's Valley (Alan & Sandra Rowland).

5 Jul – 2, St John's Valley (Alan & Sandra Rowland).

6 Jul – 25, Castle (Alan & Sandra Rowland).

7 Jul – 10, St John's Valley (Alan & Sandra Rowland).

16 Jul – large emergence on Castle Hill (Tony Taylor) – see colour plate 6.

21 Jul – seven.

23 Jul – eight.

26 Jun – six, South End

21 Jul – seven by track to Castle (Alexandra Hajok).

23 Jul – at least 15 on thistles alongside main track opposite Church (Alexandra Hajok).

171 **Five-spot burnet** *Zygaena trifolii*

20 Jun – 40+ (location(s) not given).

26 Jun-11 Jul – hundreds seen each day all over the island – see *Burnets* below.

BURNETS, 27 JUNE–7 JULY 2015

From 27 June, hundreds of adult 5- and 6-spot Burnet moths were seen from South West Field to North End wherever there was suitable grassland. Five-spots appeared to be the commonest, seen on grasses, thistles, buttercups and Bird's-foot trefoil, with 6-spot seen only on Bird's-foot trefoil and on Wild thyme (e.g. on the Castle track). Caterpillars were noted on 27 & 28 June but none later than 28th, when it was assumed that all caterpillars were then in their cocoons. Copulating pairs were noted from 27 June to 4 July. From 4 July, their life cycle apparently complete, dead moths were noted, having mated and the females laying eggs (although none were found). Emerged adults were seen from 7 July along the Castle track and in St John's Valley.

Alan Rowland

4 Jul – 300 (location(s) not given).
7 & 9 Jul – 200 (location(s) not given).
16 Jul – 1100+ (general locations not given).
10, 12 & 16 Aug – two (locations not given).
16 Jul – a major emergence, mainly on Castle Hill, most feeding on carpets of Thyme or on
thistles (up to nine on a single flower-head); some males waiting on pupae to mate with
emerging females (Tony Taylor).

361 ***Phyllonorycter trifasciella***

3-8 Sep – five in the Ugly (Tony Simpson).

383 **Thrift clearwing** *Syansphecica muscaeformis*

6 Jul – two empty pupal cases sticking out of dead Thrift flowerheads at bottom of Beach
Road (Andrew Jewels).

464 **Diamond-back moth** *Plutella xylostella*

16-17 Apr – two trapped, Little St John's (Tony John).

672 **Parsnip moth** *Depressaria radiella*

16-17 Apr – three trapped, Little St John's (Tony John).

16-17 Apr – two trapped, Casbah (Paul Holt).

839 ***Nothris congressariella***

10-14 Sep – number not given, trapped, National Moth Night (Andrew Cleave).

970 **Barred Fruit-tree Tortrix** *Pandemis cerasana*

7 Jul – two trapped, Casbah (Alan & Sandra Rowland).

1038 ***Acleris laterana***

3-8 Oct – number not given, trapped, Government House (Tony Simpson).

1342 ***Eudonia angustea***

3-8 Oct – 6 trapped, Government House (Tony Simpson).

1398 **Rush veneer** *Nomophila noctuella*

11 Jun – one at top of South Light steps (Tim Davis & Tim Jones).

14 Jun – one on Upper East Side Path (Tim Davis & Tim Jones).

15 Jun – one in St John's Valley (Tim Davis & Tim Jones).

12 Sep – one in Millcombe (Tim Davis & Tim Jones).

13 Sep – ten in Millcombe (Tim Davis & Tim Jones).

15 Sep – seven, various locations (Tim Davis & Tim Jones).

18 Sep – ten "widespread" around island.

3-8 Sep – present around the Ugly (Tony Simpson).

12 Oct – one (location not given).

18 Sep – ten, various locations (Tim Davis & Tim Jones).

1634 **The lackey** *Malacosoma neustria*

3 & 6 Jul – one, Millcombe (Alan & Sandra Rowland).

8 Jul – one caterpillar below Government House (Andrew Jewels).

1636 **Grass eggar** *Lasiocampa trifolii*

10 Aug – one at Hammers (Rob Curtis & Tony Leat).

1637 **Oak eggar** *Lasiocampa quercus*

11 May – a caterpillar on East Side Path.

26 May – a caterpillar above (presumably North) Quarry.

10 Aug – six (location not given).

1638 **Fox moth** *Macrothylacia rubi*

20 Sep – 88 caterpillars.

11 Oct – 20+ caterpillars on path near Shutter Point.

13 Oct – 30+ caterpillars.

1643 **Emperor moth** *Saturnia pavonia*

16 Apr – one male.

25 Apr – one female.

6 Jun – one.

1689 **Mullein wave** *Scopula marginepunctata*

15-16 Jun – one trapped, Big St John's (Tim Davis & Tim Jones).

1727 **Silver ground carpet** *Xanthorhoe montanata*

15 Jun – one in Millcombe (Tim Davis & Tim Jones).

1728 **Garden carpet** *Xanthorhoe fluctuata*

16-17 Apr – two trapped, Casbah (Paul Holt).

1752 **Purple bar** *Cosmorhoe ocellata*

15 Jun – one along Upper East Side Path (Tim Davis & Tim Jones).

1764 **Common marbled carpet** *Dysstroma truncata*

3-8 Oct – number not given, trapped, Government House (Tony Simpson).

7 Jul – one trapped, Casbah (Alan & Sandra Rowland).

1768 **Grey pine carpet** *Thera obeliscata*

3-8 Oct – one trapped, Government House (Tony Simpson)

1817 **Foxglove pug** *Eupithecia pulchellata*

15-16 Jun – two trapped, Big St John's (Tim Davis & Tim Jones).

1825 **Lime-speck Pug** *Eupithecia centaureata*

5 Jul – one trapped, Little St John's (Alan & Sandra Rowland).

1846 **Narrow-winged Pug** *Eupithecia nanata*

5 Jul – one trapped, Little St John's (Alan & Sandra Rowland).

1862 **Double-striped pug** *Gymnoscelis rufifasciata*

16-17 Apr – two trapped, Little St John's (Tony John).

16-17 Apr – one trapped, Casbah (Paul Holt).

1902 **Brown silver-line** *Petrophora chlorosata*

26 May – one on bracken in (presumably North) Quarry.

3 Jun – present all along East Side (Roger & Rosy Key, Steve Compton).

14 Jun – one in Millcombe (Tim Davis & Tim Jones).

15 Jun – three (locations not given).

27 Jun – one, Little St John's (Alan & Sandra Rowland).
3 Jul – 19 along Lower East Side Path (Alan & Sandra Rowland).
10 Jul – six, east side of North End (Alan & Sandra Rowland).

1906 **Brimstone moth** *Opisthograptis luteolata*
16-17 Apr – one trapped, Little St John's (Tony John).

1917 **Early thorn** *Selenia dentaria*
14-15 Apr – three trapped, Little St John's (Tony John).
16-17 Apr – three trapped, Little St John's (Tony John).
16-17 Apr – two trapped, Casbah (Paul Holt).

1931 **Peppered moth** *Biston betularia*
5 Jul – one trapped, Little St John's (Alan & Sandra Rowland).

1934 **Dotted border** *Agriopsis marginaria*
16-17 Apr – two trapped, Little St John's (Tony John).
16-17 Apr – eight trapped, Casbah (Paul Holt).

1972 **Convolvulus hawk-moth** *Agrius convolvuli*
5 Jun – one, near Benjamin's Chair (Richard Taylor). Richard provided the following behavioural note: "On 5 June 2015 I was watching a female Wheatear about 20 feet from her nest, which was half way up the south slope/cliff just east of Benjamin's Chair. The Wheatear suddenly darted at something and pecked at it. It started flapping and I could see it was a Convolvulus hawk-moth. The Wheatear pecked at its head region three or four times. The moth moved a few inches and sat on the cliff with its wings half open looking slightly unhealthy and not moving. The Wheatear danced around for a few seconds with its wings raised above its back before loosing interest and carried on foraging."

1984 **Hummingbird hawk-moth** *Macroglossum stellatarum*
6, 12, 14 & 15 Jun – singles (locations not given).
15 Jun – one near Old Light (Tim Davis & Tim Jones).
3 & 17 Jul – two (locations not given).
10 Jul – one feeding on Creeping thistle at Brazen Ward (Sandra Rowland); one by Marisco Tavern (Beccy MacDonald).
12 Jul – two at Barton Cottages (Beccy MacDonald).
16 Jul – one by main track to Castle (Tony Taylor).
17 Jul – one at the Ugly and one by Marisco Tavern (Tony Taylor).
18 Jul – one at Earthquake (Jo Maris).
7, 15, 23, 24 & 25 Sep – singles (locations not given).

1994 **Buff-tip** *Phalera bucephala*
15 May – one, location not given (Robin Hall).
5 Jul – one trapped, Little St John's (Alan & Sandra Rowland).

2037 **Rosy footman** *Mittochrista miniata*
23 Jul – one (dead) in Millcombe House (Alexandra Hajok).
10-14 Sep – number not given, trapped, National Moth Night (Andrew Cleave).

2045 **Hoary footman** *Eilema caniola*
10-14 Sep – number not given, trapped, National Moth Night (Andrew Cleave).

2047 **Scarce footman** *Eilema complana*

9 Sep – three, Old Light Manx Shearwater colony (David Price *et al.*).

2057 **Garden tiger** *Arctia caja*

9 Apr – a caterpillar near Quarter Wall Cottages (Martyn Roper).

28 May – a caterpillar just south of Halfway Wall east of main track.

28 May – two caterpillars opposite ends of Halfway Wall (Paul McGowan).

30 May – a caterpillar next to the Beach Road (Rebecca Taylor).

25 Jul – one on Lower East Side Path north of Brazen Ward (Trevor & Karen Dobie).

2058 **Cream-spot tiger** *Arctia villica*

23 May – one, location not given (Natural England group).

1 Jul – one, St John's Valley (Alan & Sandra Rowland).

2060 **White ermine** *Spilosoma lubricipeda*

14-15 Jun – one trapped, Big St John's (Tim Davis & Tim Jones).

15-16 Jun – ten trapped, Big St John's (Tim Davis & Tim Jones).

29 Jun – one, Little St John's (Alan & Sandra Rowland).

3 Jul – one, Marisco Tavern Ladies WCV (Alan & Sandra Rowland).

5 Jul – 15, Little St John's (Alan & Sandra Rowland).

7 Jul – four trapped, Casbah (Alan & Sandra Rowland).

2061 **Buff ermine** *Spilosoma lutea*

15-16 Jun – two trapped, Big St John's (Tim Davis & Tim Jones).

5 Jul – one, inside the Tavern (Alan & Sandra Rowland).

5 Jul – two trapped, Little St John's (Alan & Sandra Rowland).

7 Jul – six trapped, Casbah (Alan & Sandra Rowland).

2063 **Muslin moth** *Diaphora mendica*

17 Feb – one (location not given).

2064 **Ruby tiger** *Phragmatobia fuliginosa*

26 Apr – one at North End (P Bright).

11 May – one on Quarry Beach path.

2087 **Turnip moth** *Agrotis segetum*

3-8 Oct – one trapped, Government House (Tony Simpson).

2089 **Heart and dart** *Agrotis exclamatoris*

14-15 Jun – one trapped, Big St John's (Tim Davis & Tim Jones).

5 Jul – six trapped, Little St John's (Alan & Sandra Rowland).

7 Jul – two trapped, Casbah (Alan & Sandra Rowland).

2090 **Crescent dart** *Agrotis trux lunigera*

10-14 Sep – number not given, trapped, National Moth Night (Andrew Cleave).

2091 **Dark sword-grass** *Agrotis ipsilon*

14-15 Apr – seven trapped, Little St John's (Tony John).

16-17 Apr – four trapped, Little St John's (Tony John).

2104 **Northern rustic** *Standfussiana lucerneae*

15-16 Jun – two trapped, Big St John's (Tim Davis & Tim Jones).

2107 **Large yellow underwing** *Noctua pronuba*
10-14 Sep – number not given, trapped, National Moth Night (Andrew Cleave).
3-8 Oct – number not given, trapped at Government House (Tony Simpson).
5 Jul – three trapped, Little St John's (Alan & Sandra Rowland).

2109 **Lesser yellow underwing** *Noctua comes*
10-14 Sep – number not given, trapped, National Moth Night (Andrew Cleave).
3-8 Oct – number not given, trapped at Government House (Tony Simpson).

2117 **Autumnal rustic** *Eugnorisma glareosa*
10-14 Sep – number not given, trapped, National Moth Night (Andrew Cleave).

2120 **Ingrailed clay** *Diarsia mendica*
5 Jul – one trapped, Little St John's (Alan & Sandra Rowland).

2123 **Small square-spot** *Diarsia rubi*
14-15 Jun – three trapped, Big St John's (Tim Davis & Tim Jones).
15-16 Jun – one trapped, Big St John's (Tim Davis & Tim Jones).

2126 **Setaceous Hebrew character** *Xestia c-nigrum*
16-17 Apr – one trapped, Casbah (Paul Holt).
15-16 Jun – one trapped, Big St John's (Tim Davis & Tim Jones).

2134 **Square-spot rustic** *Xestia xanthographa*
3-8 Oct – trapped, number not given, Government House – Tony Simpson).

2160 **Bright-line brown-eye** *Lacanobia oleracea*
14-15 Jun – four trapped, Big St John's (Tim Davis & Tim Jones).
15-16 Jun – 11 trapped, Big St John's (Tim Davis & Tim Jones).
5 Jul – 65 trapped, Little St John's (Alan & Sandra Rowland).
7 Jul – six trapped, Casbah (Alan & Sandra Rowland).

2163 **Broom moth** *Ceramica pisi*
5 Jul – one trapped, Little St John's (Alan & Sandra Rowland).

2171 **Marbled coronet** *Hadena confusa*
16-17 Apr – three trapped, Little St John's (Tony John).

2173 **The lychnis** *Hadena bicurris*
5 Jul – one trapped, Little St John's (Alan & Sandra Rowland).
7 Jul – one trapped, Casbah (Alan & Sandra Rowland).

2187 **Common quaker** *Orthosia cerasi*
16-17 Apr – six trapped, Little St John's (Tony John).
16-17 Apr – three trapped, Casbah (Paul Holt).

2190 **Hebrew character** *Orthosia gothica*
16-17 Apr – one, Casbah.

2202 **L-album wainscot** *Mythimna l-album*
15-16 Jun – one trapped, Big St John's (Tim Davis & Tim Jones).
10-14 Sep – number not given, trapped, National Moth Night (Andrew Cleave).

2243 **Early grey** *Xylocampa areola*

14-15 Apr – one trapped, Little St John's (Tony John).
16-17 Apr – three trapped, Little St John's (Tony John).
16-17 Apr – two trapped, Casbah (Paul Holt).

2255 **Feathered ranunculus** *Polymixis lichenea*

3-8 Oct – two, Government House (Tony Simpson).

2270 **Lunar underwing** *Omphaloscelis lunosa*

3-8 Oct – number not given, trapped, Government House (Tony Simpson).

2289 **Knot grass** *Acronicta rumicis*

14-15 Jun – one, trapped, Big St John's (Tim Davis & Tim Jones).
15-16 Jun – one, trapped, Big St John's (Tim Davis & Tim Jones).
5 Jul – two trapped, Little St John's (Alan & Sandra Rowland).

2305 **Small angle shades** *Euplexia lucipara*

7 Jul – one trapped, Casbah (Alan & Sandra Rowland).

2306 **Angle shades** *Phlogophora meticulosa*

16-17 Apr – two trapped, Little St John's (Tony John).
14-15 Jun – one trapped, Big St John's (Tim Davis & Tim Jones).
5 Jul – one trapped, Little St John's (Alan & Sandra Rowland).
10-14 Sep – number not given, trapped, National Moth Night (Andrew Cleave).

2321 **Dark arches** *Apamea monoglypha*

5 Jul – two trapped, Little St John's (Alan & Sandra Rowland).
7 Jul – one trapped, Casbah (Alan & Sandra Rowland).

2353 **Flounced rustic** *Luperina testacea*

10-14 Sep – number not given, trapped, National Moth Night (Andrew Cleave).

2364 **Frosted orange** *Gortyna flavago*

10-14 Sep – number not given, trapped, National Moth Night (Andrew Cleave).

2403 **Bordered straw** *Heliothis peltigera*

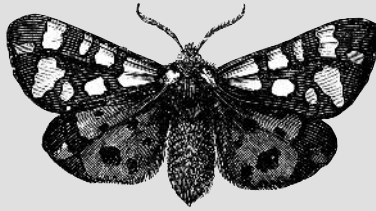
14-15 Apr – one trapped, Little St John's (Tony John).
10 Jun – one on West Side near Battery (Tim Davis & Tim Jones).
10-14 Sep – number not given, trapped, National Moth Night (Andrew Cleave).

2441 **Silver Y** *Autographa gamma*

15 May – two.
3 Jul – three, Lower East Side Path (Alan & Sandra Rowland).
4 Jul – eight on heather at North End (Alan & Sandra Rowland).
5 Jul – one trapped, Little St John's; two, Pondsbyury & Government House (Alan Rowland).
9 Jul – two, North End (Alan & Sandra Rowland).
17 Sep – 30.
3-8 Oct – number not given, trapped, Government House (Tony Simpson).

2450 **The spectacle** *Abrostola tripartita*

5 Jul – one trapped, Little St John's (Alan & Sandra Rowland).



NATIONAL MOTH WEEK ON LUNDY, 10–14 SEPTEMBER 2015

The focus was on migration and traps were set around Brambles and Millcombe. Quite a few migrants turned up, including Scarce bordered straw (possibly a first record for Lundy) and Rush veneer. Nearly 40 species were recorded, including two Lundy specialities: *Nothris congressariella* and the Lundy form of Lesser yellow underwing. Other 'local' species were Hoary footman and Crescent dart. Most abundant were Large yellow underwing and Flounced rustic. All went well until two Pygmy shrews found their way into one of the traps and ate all the moths. Among other species trapped were two species of Sexton beetle, two species of Caddisfly, while Craneflies and Harvestmen were also abundant.

Andrew Cleave

SPIDERS (Araneae)

Zebra spider *Salticus scenicus*

3 Jun – one on castellated wall along Beach Road at entrance to Millcombe (Roger & Rosy Key, Steve Compton).

Amarobius fenestralis

3 Jun – one in Timekeeper's Hut (Roger & Rosy Key, Steve Compton).

A cellar spider Pholcidae

11 Jul – four, inside Little St John's (Alan & Sandra Rowland).

BUMBLE-BEES & WASPS (Hymenoptera)

White-tailed bumble-bee *Bombus lucorum*

26 May – one, location not given (Philip & Helen Lymbury).

28 May – 22 (Philip & Helen Lymbury).

Buff-tailed bumble-bee *Bombus terrestris*

14 Apr – "numerous" on willow flowers on the Terrace (Tim Jones *et al.*).

25 Oct – several in Millcombe.

SLUGS & SNAILS (Gastropoda)

Great grey slug (Leopard slug) *Limax maximus*

19 Feb – one, South West Point.

FLORA

Sequence and nomenclature follow Stace, C. 2010. *New Flora of the British Isles*. 3rd edition. Cambridge University Press. See www.thewildflowersociety.com/wfs_list_of_all_plants/main_menu_2010.htm for Stace 3rd edition names.

FERNS

Small adder's-tongue *Ophioglossum azoricum*

26 May – 26 plants near Rocket Pole (Ann Taylor, Richard & Rebecca Taylor).

1 Jul – around 50 'flowering' stalks in Middle Park (Alan & Sandra Rowland).

10 Jul – 17 spikes in Middle Park (Andrew Jewels).

Royal fern *Osmunda regalis*

7 Jul – present in North Quarry (Andrew Jewels).

6 Oct – one small plant in the Brazen Ward area (unattributed record).

Wall-rue *Asplenium ruta-muraria*

29 Jun – five, Tillage Field (Alan & Sandra Rowland).

Rustyback *Asplenium ceterach*

10 Jul – 467 counted on St John's Valley wall (Alan & Sandra Rowland).

FLOWERING PLANTS

Meadow buttercup *Ranunculus acris*

21-22 Oct – present.

Common chickweed *Cerastium fontanum*

25 Oct – in flower in Millcombe.

Rock sea-spurrey *Spergularia rupicola*

10-14 Sep – in flower, location not given (Andrew Cleave).

21-22 Oct – present, location not given.

Sea campion *Silene uniflora*

30 Oct – in flower at Benjamin's Chair (Micheael Williams).

Marsh St John's-wort *Hypericum elodes*

18 Sep – many shoots around the north-east fringes of Pondsburry, with a few flowers, ranging from buds to seedheads (Tony Taylor).

Trailing St John's-wort *Hypericum humifusum*

10-14 Sep – flowering in the Quarries (Andrew Cleave).

Round-leaved sundew *Drosera rotundifolia*

31 May – present in North Quarry (Roger & Rosy Key, Steve Compton).

5 Jul – an estimated 300 plants on the east side of Pondsburry (Alan & Sandra Rowland).

Bog pimpernel *Angallis tenella*

31 May – present in North Quarry (Roger & Rosy Key, Steve Compton).

Scarlet pimpernel *Anagallis arvensis*

25 Oct – in flower in Millcombe.

Navelwort (= Wall Pennywort) *Umbilicus rupestris*

21-22 Oct – on walls near Government House.

Tormentil *Potentilla erecta*

21-22 Oct – “frequent everywhere”.

Bird’s-foot *Ornithopus perpusillus*

29 Jun – present at Ackland’s Moor Pond (Alan & Sandra Rowland).

Sea storksbill *Erodium maritimum*

10-14 Sep – in flower, location not given (Andrew Cleave).

Common centaury *Centaureum erythraea*

10-14 Sep – in flower, location not given (Andrew Cleave).

Selfheal *Prunella vulgaris*

21-22 Oct – present, location(s) not given.

Twiggy Mullein *Verbascum virgatum*

6 Jul – one in Millcombe gardens (Alan & Sandra Rowland).

Balm-leaved figwort *Scrophularia scorodonia*

6 Oct – flowering along Lower East Side Path.

8 Oct – present on the Terrace.

Ivy-leaved toadflax *Cymbalaria muralis*

21-22 Oct – on walls near Shop.

Common field-speedwell *Veronica persica*

25 Oct – in flower in Millcombe.

Lousewort *Pedicularis sylvatica*

10 Nov – on track at Pondsburry (Sandra Rowland).

Broomrape sp. *Orobanche* sp.

31 May – one plant growing beside Broom high on the northern side of VC Quarry (Roger & Rosy Key, Steve Compton).

2 Jun – seven spikes of Broomrape with Broom in Quarry Bay (Roger & Rosy Key, Steve Compton).

Sheep’s-bit *Jasione montana*

10-14 Sep – in flower, location not given (Andrew Cleave).

21-22 Oct – in flower, scattered on heathland.

25 Oct – present near South Light helipad (Michael Williams).

30 Oct – in flower at Benjamin’s Chair (Michael Williams).

Autumn hawkbit *Leontodon autumnalis*

21-22 Oct – present.

Umbellate hawkweed *Hieracium umbellatum*

10-14 Sep – in flower in the Quarries (Andrew Cleave).

21-22 Oct – in Quarries.

Goldenrod *Solidago virgaurea*

10-14 Sep – in flower in the Quarries (Andrew Cleave).

Yarrow *Achillea millefolium*

21-22 Oct – very common.

Sea mayweed *Tripleurospermum maritimum*

21-22 Oct – present, location not given.

Common ragwort *Senecio jacobaea*

21-22 Oct – present.

25 Oct – in flower in Millcombe.

Bog asphodel *Narthecium ossifragum*

5 Jul – ca. 450 flowering plants on the east side of Pondsburry (Alan & Sandra Rowland).

Snowdrop *Galanthus nivalis*

15 Feb – north end of Government House (Alan Rowland & Sandra Rowland).

Spanish bluebell *Hyacinthoides hispanica*

1 May – a single flower spike near the Blue Door (Andrew Cleave).

Hybrid daffodil cultivar *Narcissus x medioluteus* 'Primrose Peerless'

1 May – in flower in sheltered location on the East Side near Millcombe (Andrew Cleave).

Heath spotted-orchid *Dactylorhiza maculata*

4 Jun – four on south side of Pondsburry (Tim Davis & Tim Jones).

21 Jun – two between main track and Pondsburry (Ian Nicol).

30 Jun – present around Pondsburry.

5 Jul – an estimated 800 flowering plants on the east side of Pondsburry (Alan & Sandra Rowland).

Plant species recorded by Sandra Rowland, 27 June–11 July 2015

Alexanders; Bell heather; Betony; Bird's-foot trefoil; Bird's-foot; Black medic; Black spleenwort; Bluebell; Bog asphodel; Bog pimpernel; Bracken; Bramble; Broom; Buckler fern; Buttercup; Cleavers; Common centaury; Common mallow; Common sorrel; Common sundew; Common vetch; Cotton grass; Daisy; Dove's-foot cranesbill; Dwarf willow; Elder; English stonecrop; Eyebright; Flowering rush; Foxglove; Germander speedwell; Greater Birds-foot trefoil; Ground ivy; Haresfoot clover; Heath bedstraw; Heath spotted orchid; Herb robert; Honeysuckle; Ivy-leaved toadflax; Ling heather; Lousewort; Lundy cabbage; Maidenhair spleenwort; Marsh St John's wort; Milkwort; Nettle; Polypody; Potamogeton; Red campion; Red clover; Rosebay willowherb; Royal fern; Rustyback; Sea spurrey; Selfheal; Skullcap; Slender St John's wort; Sloe (fruiting); Small-adder's tongue; Soft rush; Spike rush; Lesser stitchwort; Sundew; Thrift; Tormentil; Wall pennywort; Wall rue; Water forget-me-not; White clover; Wild arum; Wild thyme; Wood sage; Woody nightshade; Yarrow; Yellow iris; Yellow pimpernel.

LICHENS

Golden hair lichen *Teloschistes flavicans*

17 Feb – clumps on ground on last two bends of path down to The Battery (Beccy MacDonald).

25 May – by cliff-top fencing on West Side just beyond Quarter Wall (Ann & Tony Taylor).

16 Jul – near Dead Cow Point (Tony Taylor) – see colour plate 5.

28 Oct – present on wall down to The Battery (Kingshott family).

10 Nov – present at North End (Sandra Rowland).

FUNGI

Scientific nomenclature and sequence follow Hedger *et al.* 2010. Lundy Fungi: Further Surveys 2004–2008. *Journal of the Lundy Field Society*, Vol. 2, pp 21–44.

Porcelain fungus *Oudemansiella mucida*

18 Sep – 15+ spore-bearing bodies in six groups on a Beech tree in Millcombe wood (Tony Taylor).

A slime mould *Ceratiomyxa fruticulosa*

12 Jul – Quarter Wall Copse (Alan & Sandra Rowland) – see colour plate 2.

Crow pinkgill *Entoloma corvinum*

9 Jul – Middle Park (Alan & Sandra Rowland) – see colour plate 3.

See also 'Autumn Surveys of Fungi on Lundy', p.98.

* * *

BRITISH ENTOMOLOGICAL AND NATURAL HISTORY SOCIETY VISIT TO LUNDY, 5–8 JULY 2014

The British Entomological and Natural History Society (BENHS), based in Hurst, Reading was founded in 1871. Its objectives are the promotion and advancement of research in entomology with an increasing emphasis now being placed on the conservation of the fauna and flora of the United Kingdom and the protection of wildlife throughout the world.

The roll call of entomologists who have visited Lundy since the middle of the 19th century includes T.V. Wollaston, F. Smith, F.A. Walker, N.H. Joy, J.R. le B. Tomlin, H.St.J. Donisthorpe, R.S. Mitford, C. MacKechnie-Jarvis and R.C. Welch. Many of their records are for beetles, and these were summarised in 1975 by Martin Brendell (Coleoptera of Lundy, Annual Report of the Lundy Field Society, 26: 29-53).

Up to the BENHS visit in July 2014, invertebrate records were occasional so they determined to try to expand the lists of species. Their main focus was on the village and Millcombe area, although the lists show that members of the party ventured all the way to North End. The emphasis is mainly on spiders (Table 1) but the following species were also recorded:

Beetles

Coccinella hieroglyphica – three x 24-spot ladybirds, central track Gannets' Combe, 6 Jul 2014
Notiophilus aquaticus – a Bronze ground beetle, North End, 6 Jul 2014
Badister bullatus – a Carabid beetle, central track Gannets' Combe, 6 Jul 2014
Chrysolina banksi – adult Leaf beetle, South Light, 7 Jul 2014
Carabus nemoralis – an adult Bronze Carabid beetle, St John's Valley, 7 Jul 2014
Ulopa reticulata – an adult Cicadella beetle, village, 6 Jul 2014
Cteniopus sulphureus – an adult Sulphur beetle, Castle Hill, 5 Jul 2014
Typhaeus typhoeus – a Minotaur beetle, Quarries, 8 Jul 2014

Harvestman

Leiobunum rotundum – an adult female, Beach Road, 5 Jul 2014
Leiobunum blackwalli – eight adult females, North Light, 6 Jul 2014
Leiobunum blackwalli – an adult female, Quarry Beach, 7 Jul 2014
Leiobunum rotundum – an adult female, Middle Park, 7 Jul 2014
Dicranopalpus ramosus – two Fork-palped harvestman, Middle Park, 7 Jul 2014

Bugs

Pithanus maerkelii – an adult female Mirid gug, Millcombe Valley, 5 Jul 2014
Capsus ater – a Mirid bug, Punchbowl Valley, 6 Jul 2014
Cyrtorhinus caricis – an adult Mirid bug, Punchbowl Valley, 6 Jul 2014
Closterotomus norwegicus – a Potato Capsid bug, Middle Park, 7 Jul 2014

Pseudo-scorpion

Chthonius ischnocheles – an adult male, Castle Hill, 7 Jul 2014

Table 1. Species of spider recorded during the BENHS visit to Lundy, 5–8 July 2014					
Scientific name	Vernacular name	No.	Stage/sex	Location	Date
<i>Araneus diadematus</i>	Garden spider	1	Adult female	Castle Hill	5 October 2014
<i>Araneus diadematus</i>	Garden spider	1	Adult female	Beach Road	
<i>Bathyphantes parvulus</i>	A spider	1	Adult male	Village	
<i>Clubiona reclusa</i>	A leaf-curling sac spider	1	Adult female	Village	
<i>Drassyllus pusillus</i>	Black Zelote spider	1	Adult female	Castle Hill	
<i>Enoplognatha ovata sens. str.</i>	A spider	1	Adult male	Village	
<i>Euophrys frontalis</i>	A jumping spider	1	Adult male	Castle Hill	
<i>Heliophanus cupreus</i>	Woodlouse spider	1	Adult female	Castle Hill	
<i>Lepthyphantes zimmermanni</i>	A spider	1	Adult female	Middle Park	
<i>Meta menardi</i>	Cave spider	1	Adult female	Beach Road	
<i>Neriere clathrata</i>	Herb hammock spider	1	Adult male	St John's Valley	
<i>Nuctenea umbratica</i>	Walnut orb-weaver	1		Middle Park	
<i>Pardosa monticola</i>	Pin-stripe wolf spider	1	Adult female	Castle Hill	
<i>Pholcus phalangioides</i>	Cellar spider	4		Castle Hill	
<i>Pholcus phalangioides</i>	Cellar spider	11		Castle Hill	
<i>Segestria bavarica</i>	A spider	2	Adult female	Castle Hill	
<i>Segestria senoculata</i>	Snake-back spider	1	Adult female	St John's Valley	
<i>Textrix denticulata</i>	Toothed weaver	1		St John's Valley	
<i>Xysticus cristatus</i>	A crab spider	1	Adult male	Village	
<i>Agyneta conigera</i>	A sheet-weaver spider	2	Adult female	North End	6 October 2014
<i>Agyneta conigera</i>	A sheet-weaver spider	2	Adult female	Village	
<i>Agyneta decora</i>	A sheet-weaver spider	2	Adult male	North End	
<i>Agyneta decora</i>	A sheet-weaver spider	1	Adult female	North End	
<i>Alopecosa pulverulenta</i>	A wolf spider	1	Adult female	Devil's Slide	
<i>Bathyphantes gracilis</i>	A spider	1	Adult female	Punchbowl Valley	
<i>Bathyphantes gracilis</i>	A spider	1	Adult male	Punchbowl Valley	
<i>Ceratinella brevipes</i>	A spider	1	Adult female	North End	
<i>Ceratinella brevipes</i>	A spider	1	Adult female	Village	
<i>Ceratinella brevipes</i>	A spider	1	Adult female	Middle Park	
<i>Ceratinella brevis</i>	A spider	1		Gannets' Combe	

Table 1, continued					
Scientific name	Vernacular name	No.	Stage/sex	Location	Date
<i>Ceratinella brevis</i>	A spider	1	Adult female	North End	6 October 2014
<i>Ceratinella brevis</i>	A spider	1	Adult female	Middle Park	
<i>Drassyllus pusillus</i>	A spider	1	Adult female	Castle Hill	
<i>Hahnina montana</i>	A spider	1	Adult female	North End	
<i>Harpactea hombergii</i>	Stripe-legged spider	1	Adult female	Puffin Slope	
<i>Lathys stigmatisata</i>	A spider	1	Adult female	Gannets' Combe	
<i>Lathys stigmatisata</i>	A spider	1		Gannets' Combe	
<i>Lepthyphantes ericaeus</i>	A spider	2	Adult female	North End	
<i>Lepthyphantes ericaeus</i>	A spider	1	Adult female	North End	
<i>Lepthyphantes ericaeus</i>	A spider	2	Adult male	Middle Park	
<i>Lepthyphantes mengei</i>	A spider	2	Adult female	Village	
<i>Lepthyphantes mengei</i>	A spider	1	Adult male	Middle Park	
<i>Meioneta saxatilis sens. str.</i>	A spider	1	Adult male	Punchbowl Valley	
<i>Neon reticulatus</i>	A jumping spider	1	Adult	Gannets' Combe	
<i>Oedothorax fuscus</i>	A spider	1	Adult male	Punchbowl Valley	
<i>Oedothorax fuscus</i>	A spider	1	Adult male	Village	
<i>Pachygnatha degeeri</i>	A long-jawed orb-weaver	1		North End	
<i>Pachygnatha degeeri</i>	A long-jawed orb-weaver	1	Adult female	Village	
<i>Pardosa nigriceps</i>	A wolf spider	1	Adult female	North End	
<i>Pardosa nigriceps</i>	A wolf spider	1	Adult male	North End	
<i>Pardosa nigriceps</i>	A wolf spider	1	Adult female	Village	
<i>Pelecopsis parallela</i>	A spider	1	Adult female	North End	
<i>Pelecopsis parallela</i>	A spider	1	Adult female	North End	
<i>Peponocranium ludicrum</i>	A spider	1	Adult	Gannets' Combe	
<i>Peponocranium ludicrum</i>	A spider	1	Adult female	North End	
<i>Peponocranium ludicrum</i>	A spider	2	Adult female	North End	
<i>Peponocranium ludicrum</i>	A spider	2	Adult female	Village	
<i>Peponocranium ludicrum</i>	A spider	2	Adult female	Middle Park	
<i>Pirata piraticus</i>	Pirate wolf spider	1	Adult female	Punchbowl Valley	
<i>Pocadicnemis juncea</i>	A spider	1	Adult female	North End	

Table 1, continued					
Scientific name	Vernacular name	No.	Stage/sex	Location	Date
<i>Segestria senoculata</i>	Snake-back spider	1	Adult female	North Light	6 October 2014
<i>Tiso vagans</i>	A spider	1	Adult male	North Light	
<i>Tiso vagans</i>	A spider	1	Adult female	North Light	
<i>Walckenaeria atrotibialis</i>	A spider	1	Adult female	North End	
<i>Zora spinimana</i>	A spider	1	Adult female	Gannets' Combe	
<i>Zygiella x-notata</i>	Missing-sector orb-weaver	2	Adult female	North Light	
<i>Zygiella x-notata</i>	Missing-sector orb-weaver	1		Village	
<i>Amaurobius ferox</i>	Black lace weaver	1	Adult female	Beach Road	7 October 2014
<i>Araneus diadematus</i>	Garden spider	1	Adult female	Middle Park	
<i>Araneus diadematus</i>	Garden spider	1		Beach Road	
<i>Araneus diadematus</i>	Garden spider	1	Adult female	South Light	
<i>Centromerus prudens</i>	A spider	1	Adult female	Castle Hill	
<i>Drassodes lapidosus</i>	A spider	1	Adult female	Beach Road	
<i>Enoplognatha ovata sens. str.</i>	A spider	1	Adult male	Middle Park	
<i>Enoplognatha ovata sens. str.</i>	A spider	1	Adult male	Millcombe Valley	
<i>Haplodrassus signifer</i>	A spider	1	Adult female	South Light	
<i>Harpactea hombergi</i>	Stripe-legged spider	2	Adult female	Middle Park	
<i>Harpactea hombergi</i>	Stripe-legged spider	1		Beach Road	
<i>Heliophanus cupreus</i>	A jumping spider	1	Adult male	Millcombe Valley	
<i>Lepthyphantes zimmermanni</i>	A spider	1		Middle Park	
<i>Lepthyphantes zimmermanni</i>	A spider	2	Adult male	Millcombe Valley	
<i>Lepthyphantes zimmermanni</i>	A spider	2	Adult female	Castle Hill	
<i>Meta menardi</i>	Orb-weaving cave spider	3	Adult female	Beach Road	
<i>Meta menardi</i>	Orb-weaving cave spider	3	Adult male	Beach Road	
<i>Meta menardi</i>	Orb-weaving cave spider	6		Beach Road	
<i>Metellina mengei</i>	Orb weaver spider	1	Adult male	Millcombe Valley	
<i>Metellina merianae</i>	Yellow orb-weaver	1	Adult female	Castle Hill	
<i>Metellina merianae</i>	Yellow orb-weaver	5		Castle Hill	
<i>Metellina merianae</i>	Yellow orb-weaver	1	Adult female	Beach Road	
<i>Metellina merianae</i>	Yellow orb-weaver	1	Adult female	South Light	

Table 1, continued					
Scientific name	Vernacular name	No.	Stage/sex	Location	Date
<i>Nuctenea umbratica</i>	Walnut orb-weaver spider	1		Beach Road	7 October 2014
<i>Oedothorax fuscus</i>	A spider	1	Adult male	Village	
<i>Pardosa nigriceps</i>	A wolf spider	1	Adult female	Middle Park	
<i>Pardosa pullata</i>	Common wolf spider	1	Adult male	Castle Hill	
<i>Philodromus dispar</i>	A crab spider	1	Adult female	Millcombe Valley	
<i>Phrurolithus festivus</i>	A spider	1	Adult male	Castle Hill	
<i>Steatoda nobilis</i>	False widow spider	1	Adult male	Hell's Gates	
<i>Tegenaria domestica</i>	House spider	1	Adult female	Castle Hill	
<i>Tegenaria domestica</i>	House spider	1	Adult female	Castle Hill	
<i>Tegenaria domestica</i>	House spider	5	Adult female	Hell's Gates	
<i>Zygiella x-notata</i>	Missing-sector orb-weaver	1	Adult female	Beach Road	
<i>Zygiella x-notata</i>	Missing-sector orb-weaver	1	Adult female	South Light	
<i>Amaurobius ferox</i>	Black lace weaver	1	Adult female	Quarries	
<i>Araneus diadematus</i>	Garden spider	1	Adult female	Quarries	
<i>Araneus diadematus</i>	Garden spider	1		Quarries	
<i>Araneus diadematus</i>	Garden spider	5		Quarries	
<i>Araneus diadematus</i>	Garden spider	1		Middle Park	
<i>Dysdera crocata</i>	Woodlouse spider	1	Adult male	Middle Park	
<i>Enoplognatha ovata sens. str.</i>	A spider	1	Adult female	Quarries	
<i>Meioneta saxatilis sens. str.</i>	A spider	1	Adult male	Quarries	
<i>Neon reticulatus</i>	A jumping spider	1	Adult male	Quarries	
<i>Salticus scenicus</i>	Zebra spider	1	Adult male	Middle Park	
<i>Segestria bavarica</i>	A spider	1		Middle Park	
<i>Segestria senoculata</i>	Snake-back spider	1		Quarries	
<i>Tegenaria saeva</i>	House spider	1	Adult female	Middle Park	
<i>Tetragnatha extensa</i>	A long-jawed orb-weaver	1	Adult female	Quarries	
<i>Textrix denticulata</i>	Toothed weaver spider	1		Quarries	
<i>Theridion mystaceum</i>	A spider	1	Adult female	Quarries	
<i>Trochosa terricola</i>	Ground wolf spider	1	Adult female	Quarries	