



Above: **Pelagic gooseneck barnacle** *Lepas anatifera* cluster on a plastic bottle at Hell's Gates, 25 July 2015.

Below: **Moon jellyfish** *Aurelia aurita* stranded at Hell's Gates, 25 July 2015.

Photos © Keith Hiscock





Above: **Snowy slime mould** *Ceratiomyxa fruticulosa* on Rhododendron wood, Quarter Wall Copse. Below: **Star pinkgill** *Entoloma conferendum* in short turf near the Old Hospital. Photos © Alan Rowland





Above: *Hygrocybe ?canescens* in short turf near Old Hospital.

Left: **Crow pinkgill** *Entoloma corvinum* in short grass on the path to Tibbetts.

Photos © Alan Rowland

PLATE 4



Above: **Azure pinkgill** *Entoloma chalybdaeum* var *lazulinum* in short turf, Old Hospital.

Below: **Plums and custard** *Tricholomopsis rutilans* in turf, upper Gannets' Combe.

Photos © Alan Rowland





Above: **Golden-hair lichen** *Teloschistes flavicans*, near Dead Cow Point, 16 July 2015.

© Tony Taylor

Below: **Red-veined darter** *Sympetrum fonscolombii*, Ponsbury, 6 June 2015
– a first for Lundy. © Richard Campey



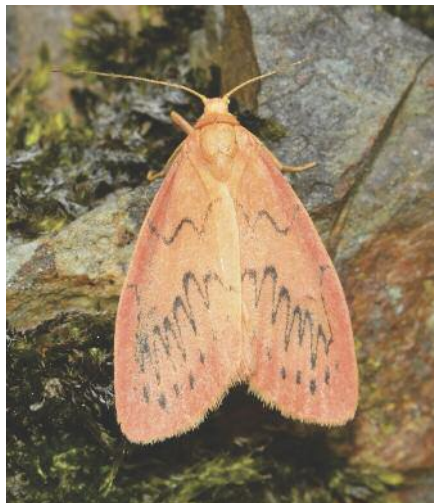


Above: **Six-spot burnet moth** *Zygaena filipendulae* emergence, Castle Hill, 16 July 2015.

Below: **Painted lady** *Vanessa cardui* caterpillar, Castle Hill, 16 July 2015.

Photos © Tony Taylor





Clockwise from top left:

Rosy footman *Miltotricha miniata*.

Autumnal rustic *Eugnorisma glareosa*.

Large yellow underwing *Noctua pronuba*.

Scarce bordered straw *Helicoverpa armigera*.

The first three were caught in the Brambles area as part of National Moth Night activity between 10 & 14 September 2015. The Scarce Bordered Straw was caught in an actinic trap in the Beer Garden.

Photos © Andrew Cleave





Clockwise from top:

Hoary footman *Eilema caniola*.

L-album wainscot *Mythimna l-album*.

Frosted orange *Gortyna flavago*.

Angle shades *Phlogophora meticulosa*.

All four were caught in the Brambles area as part of National Moth Night activity between 10 & 14 September 2015.

Photos © Andrew Cleave





Above: **Meadow Pipit** *Anthus pratensis*, near Pondsbury, 12 June 2015.

Below: Colour-ringed **Wheatear** *Oenanthe oenanthe*, west end of Quarter Wall, 12 June 2015.

Photos © Richard Campey





Clockwise from top left: **Dunlin** *Calidris alpina*, 13 September 2015. © Dave Chown

Fieldfare *Turdus pilaris*, Millcombe, 18 October 2015. © Tim Davis

Goldfinches *Carduelis carduelis*, East Side, 18 October 2015. © Tim Jones

Great Grey Shrike *Lanius excubitor*, Millcombe, 17 October 2015. © Tim Davis

Presumed **Herring Gull x Lesser Black-backed Gull**, Jenny's Cove, 26 May 2015. © Richard Taylor





Clockwise from top: **Grey Heron** *Ardea cinerea*, Brick Field Pond, 12 June 2015.

© Richard Campey

Rustic Bunting *Emberiza rustica*, trapped in Millcombe, 27 September 2015. © John Horton

Ortolan Bunting *Emberiza hortulana*, Lighthouse Field, 11 September 2015. © Dave Chown

Stonechat *Saxicola rubicola*, near Quarter Wall, 14 October 2015. © Tim Davis





Above: **Kestrel** *Falco tinnunculus*, Terrace, 5 October 2015. © Tim Jones
Below: **Treecreeper** *Certhia familiaris*, Terrace, 13 September 2015. © Dave Chown

