



Plate 1: Anchor chain from the MV Amstelstroom, wrecked below Battery Point on Lundy's west coast. Many of the ships which ran aground on this exposed coastline broke up quickly (Photo: Alan James). This accompanies the papers by Robertson and Heyes.

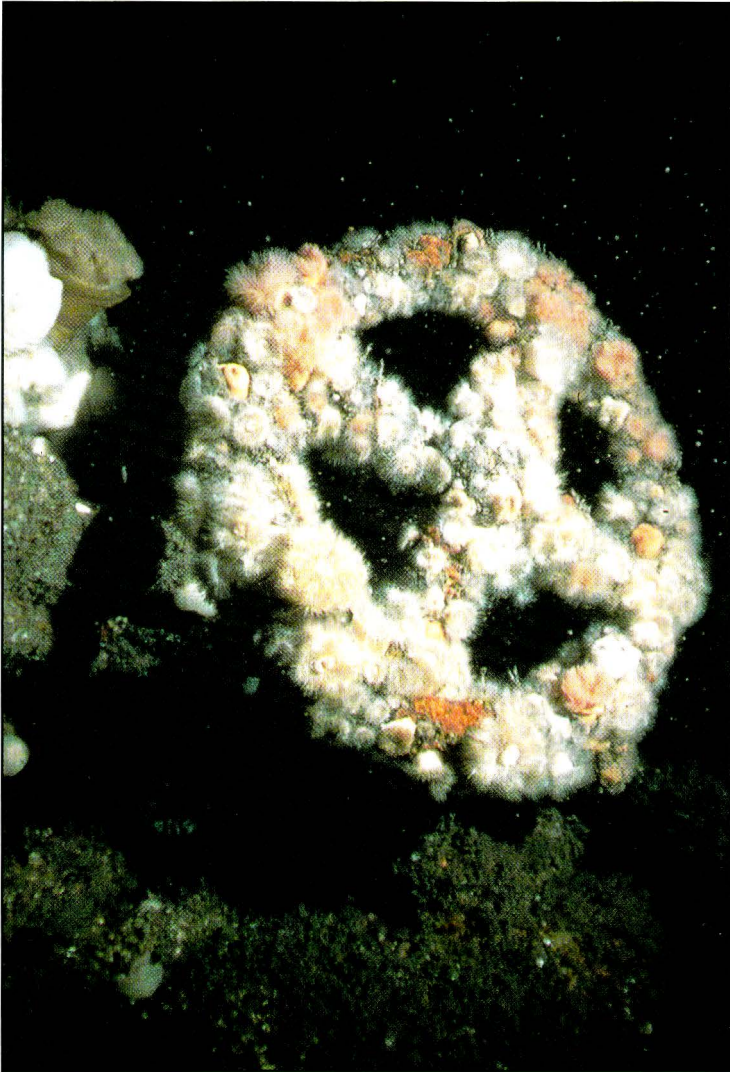


Plate 2: Lundy's wrecks provide an underwater museum of the island's prolific maritime heritage. They also provide an important habitat for its abundant marine life as is shown here on the MV Robert (Photo: Alan James). This accompanies the papers by Robertson and Heyes.